



The Soap Kitchen (2011) Ltd  
Unit 8, Caddsdawn Industrial Park, Clovelly Road,  
Bideford, Devon, EX39 3DX, United Kingdom

Email: [enquiries@thesoapkitchen.co.uk](mailto:enquiries@thesoapkitchen.co.uk)  
Call: +44 (0) 1237 420 872

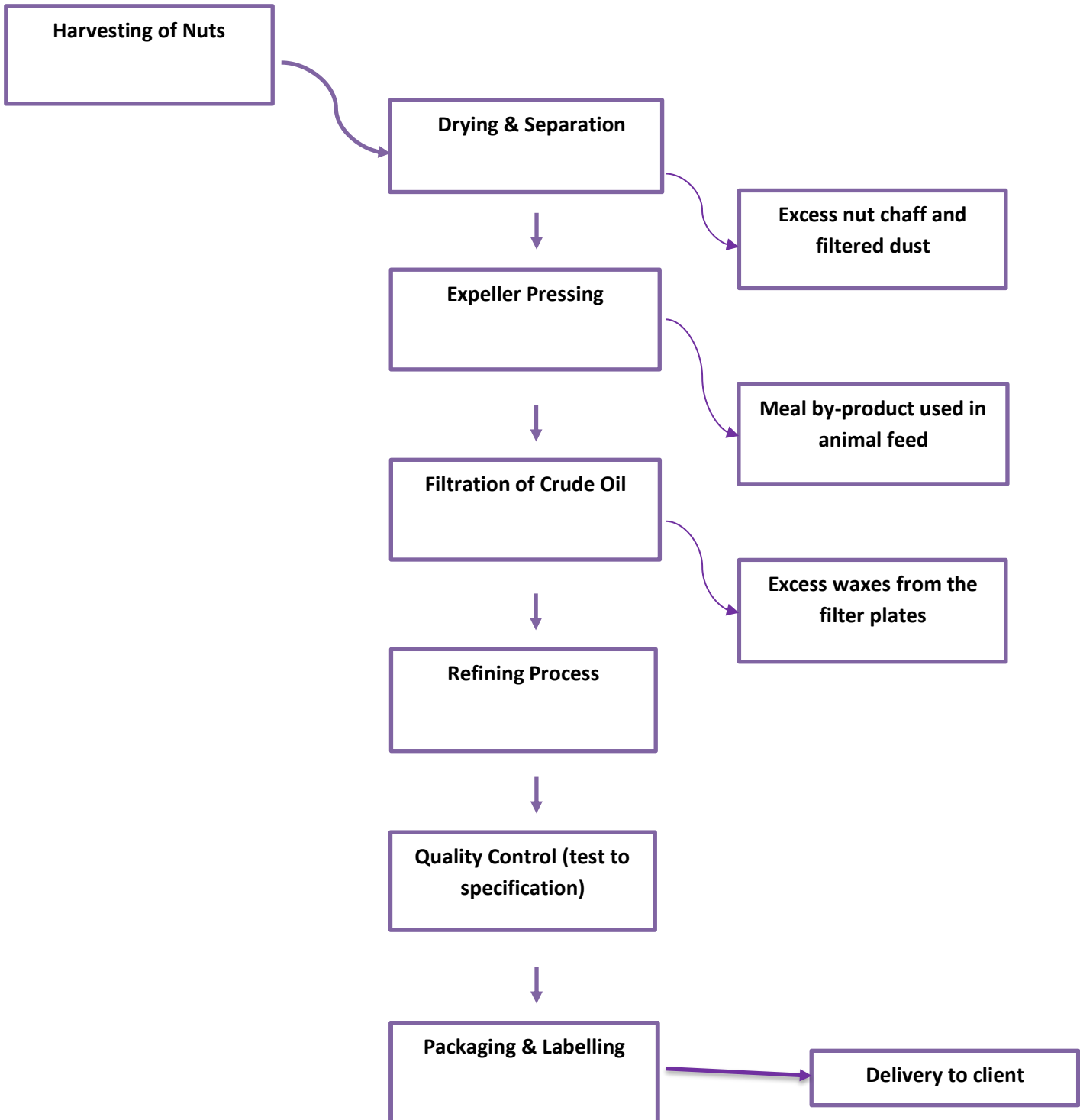
## Composition Statement & Manufacturing Flow Chart:

The Soap Kitchen can hereby confirm the following composition breakdown & manufacturing process flow;

**Almond (Sweet) BP73 Oil, Refined**

INCI Name	% Inclusion	CAS Number
Prunus Amygdalus Dulcis Oil	100	8007-69-0 / 90320-37-9

The attached information is considered to be correct at the time the client received this information. Please be aware that detail can change and we encourage clients to update their records with The Soap Kitchen regularly. The information is not and should not be considered a guarantee or warranty, or a part of our contractual or other legal obligations. The information is not to be disclosed to others, reproduced or transmitted in whole or in part without permission from The Soap Kitchen.



The attached information is considered to be correct at the time the client received this information. Please be aware that detail can change and we encourage clients to update their records with The Soap Kitchen regularly. The information is not and should not be considered a guarantee or warranty, or a part of our contractual or other legal obligations. The information is not to be disclosed to others, reproduced or transmitted in whole or in part without permission from The Soap Kitchen.